

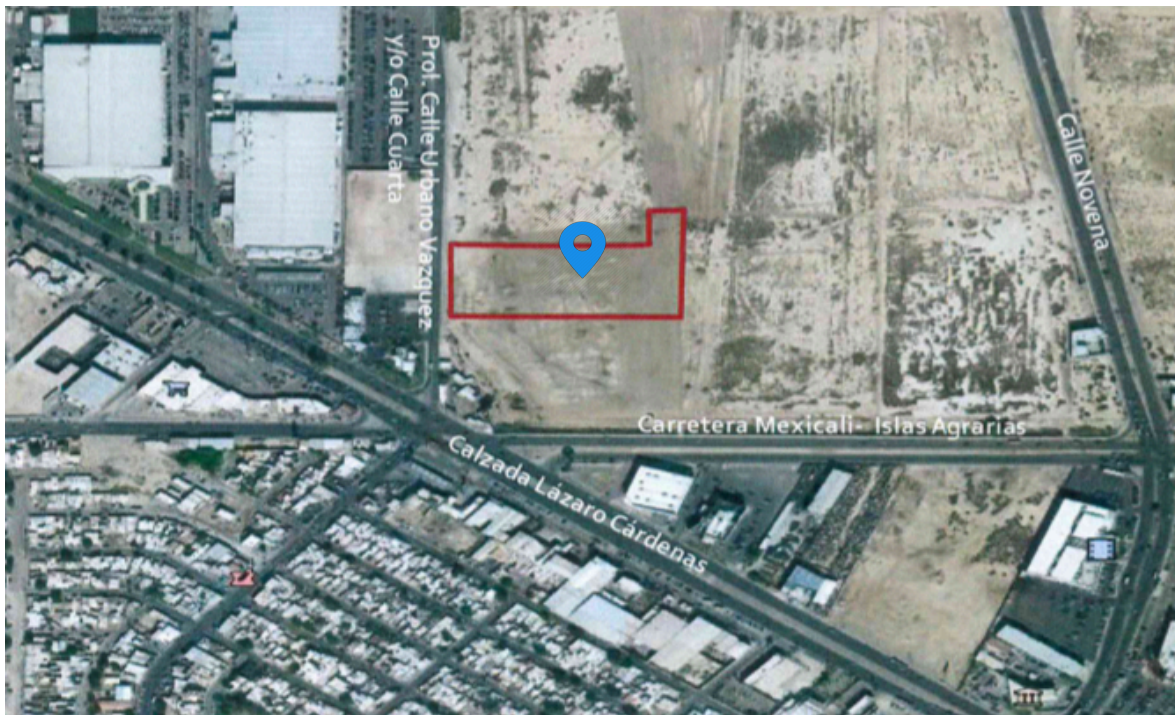


**GRUPO
NELSON**

INDUSTRIAL DEVELOPERS
SINCE 1967

MEXICALI, B.C.

TERRENO LÁZARO CÁRDENAS



LOCATION: Prolongación Calle Urbano Vázquez y/o Calle Cuarta entre Calz. Lázaro Cárdenas y Calle Instituto Tecnológico.
Land available for Built To Suit.

SUMMARY

Space Available: 15,363.152m²

HIGHLIGHTS

All Services Available
5.5 miles East Port of Entry
Ready for Built-to-Suit
Housing nearby.

